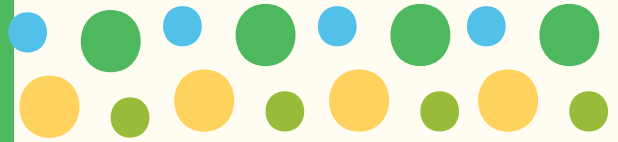




Moorland Primary School
& Nursery

Issue 3 Summer 1: May 1st



SUNNY SCHOOL DAYS



WITH THE ARRIVAL OF BRIGHTER DAYS, OUR CHILDREN HAVE BEEN ENJOYING PLENTY OF FUN IN THE SUN. OUTDOOR ACTIVITIES HAVE GIVEN EVERYONE THE CHANCE TO GET SOME FRESH AIR, STAY ACTIVE, AND MAKE THE MOST OF THE SUNSHINE, ALL WHILE CONTINUING TO LEARN. FROM PLAYFUL CHALLENGES TO CREATIVE LEARNING EXPERIENCES, BEING OUTSIDE HAS HELPED BOOST SMILES, ENERGY, AND ENGAGEMENT. LEARNING DOESN'T STOP JUST BECAUSE THE SUN IS SHINING – IT SIMPLY GETS A LITTLE BRIGHTER!



IMPORTANT



SCHOOL IS CLOSED ON MONDAY 4TH MAY
FOR BANK HOLIDAY

Our RESPECT Values:

Resilience...

Self awareness... Passion... Empathy... Communication... Teamwork



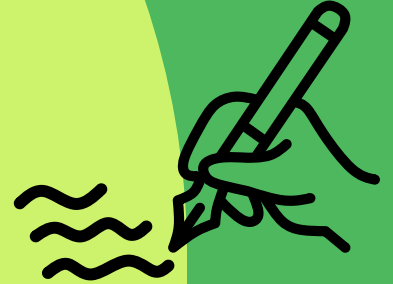
THIS WEEK IN SCHOOL



OUR OWLS CLASS HAVE BEEN LEARNING ABOUT GOLDILOCKS AND THE THREE BEARS



BADGERS HAVE BEEN LEARNING ABOUT HOWARD CARTER AND HIS DISCOVERY OF TUTANKHAMUN'S TOMB. THEY HAVE NOW FINISHED PUBLISHING THEIR BIOGRAPHIES.



HEDGEHOGS HAVE BEEN DOING COOKING THIS WEEK! IN DT, THEY MADE CARROT CAKES AND PRACTICED THEIR PEELING AND CHOPPING SKILLS. EVEN THE CHILDREN WHO SAID THEY DON'T LIKE CARROTS, REALLY ENJOYED THE CAKES!





Moorland's Question of the Week!



Should Schools do more to help the environment?

Should schools do more to help the environment?

Definitely! If we don't learn to look after the Earth now, when will we?

Schools teach children what is right and wrong, not just maths and reading. If schools waste paper or energy, it sends the wrong message. If schools don't help the environment, why should anyone else?

Teachers are already very busy teaching English and Maths. Adding more jobs could take time away from learning or make school stressful

Big companies and adults cause most pollution, not schools or children. Changes made at school are very small compared to factories, cars, and businesses. It's unfair to expect schools and children to fix a problem they didn't create.

Mrs Garner

Mrs Bull

Miss Norfolk

Mrs Carson





**harry's
rainbow**

THIS WEEK, WE WERE PLEASED TO WELCOME HARRY'S RAINBOW INTO SCHOOL TO DELIVER A SUPPORTIVE WORKSHOP WITH SOME OF OUR CHILDREN.

HARRY'S RAINBOW IS A MILTON KEYNES-BASED CHARITY THAT SUPPORTS CHILDREN AND YOUNG PEOPLE WHO HAVE BEEN BEREAVED OF A PARENT OR SIBLING. THEIR WORK FOCUSES ON HELPING CHILDREN UNDERSTAND THEIR FEELINGS, DEVELOP POSITIVE COPING STRATEGIES, AND FEEL LESS ALONE FOLLOWING A LOSS.

HARRY'S RAINBOW RUNS SUPPORTIVE, ACTIVITY-BASED WORKSHOPS TO HELP BEREAVED CHILDREN AND YOUNG PEOPLE. TO FIND OUT MORE OR TO JOIN ONE OF HARRY'S RAINBOW SUPPORT GROUPS, PLEASE CONTACT THEM FOR THE DETAILS OR POP INTO THE SCHOOL OFFICE.

HARRYS RAINBOW FAMILY LIAISON OFFICERS
INFO@HARRYSRAINBOW.CO.UK (01908) 061676



Our Attendance Heroes this week are...



94.9%

Ladybirds



92.4%

Owls



97.4%

Hedgehogs



92.2%

Squirrels



92.7%

Foxes



97.1%

Badgers



93.1%

Falcons



97.2%

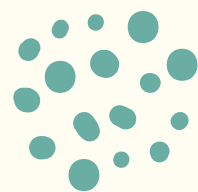
Skylarks



94.5%

Whole school

Our Moorland Marvels this week are...



Owls - Ayla

Hedgehogs - Kaden

Squirrels - Kelly

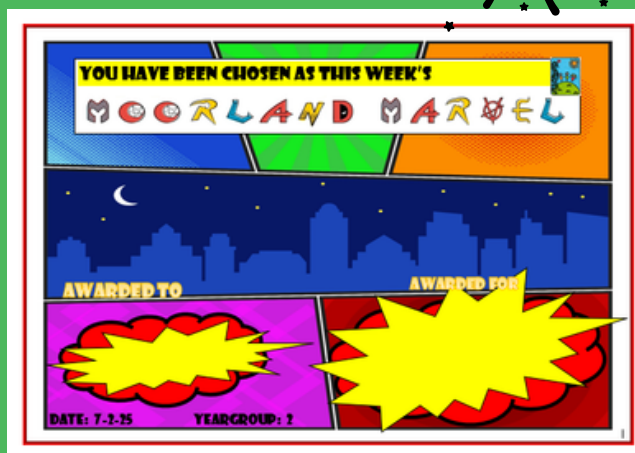
Foxes - Kencia

Badgers - Ben

Falcons - Mubashir

Skylarks - Keira

CONGRATULATIONS



Which **RESPECT** value did you demonstrate?



Our **RESPECT** Values:

Resilience... Equity... Self awareness... Passion... Empathy... Communication... Teamwork



AFTER SCHOOL CLUBS THIS TERM

You asked for more after school clubs... We listened, and here is what we can offer this term...

We are offering all our clubs for FREE now. If you haven't booked on, please do. There is limited availability so don't miss out!

TUESDAYS, 3-4PM

PREMIER SPORTS MULTI SPORTS CLUB



YEARS 1, 2, 3 & 4

FULLY BOOKED

TUESDAYS, 3-4PM

ART/ SCULPTURE CLUB



YEARS 3, 4, 5 & 6

WEDNESDAYS, 3-4.15PM



COACH STEVE FOOTBALL CLUB

YEARS 5

FULLY BOOKED

ART/ SCULPTURE CLUB



TUESDAYS, 3-4PM

YEARS 1 & 2

THURSDAYS, 3-4.15PM



COACH STEVE FOOTBALL CLUB

YEARS 6

THURSDAYS, 3-4PM

TABLE TENNIS CLUB



YEARS 2, 3 & 4

THURSDAYS 3-4PM GARDENING CLUB

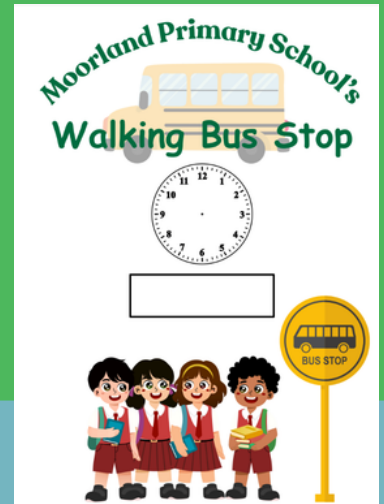
YEARS 1, 2, 3, 4, 5 & 6

FULLY BOOKED



DON'T FORGET

Walking Bus



Just a reminder of the route

Keep an eye out for our bus stop signs along the route with times to tell you what time the walking bus arrives at each street.

Walking Bus

The walking bus will be starting next week - Monday 23rd February. Come along and join us for a safe walk to school.

What is the walking bus?
The walking bus is operated by Moorland Primary School and supported by Woughton Community Council. This is a good way for children to get into school safe and on time. The walking bus will have DBS checked adults and qualified staff to guide and support children walking to school. What better way to get to school than on a Moorland bus! there will be pick up points throughout Netherfield where you can join the bus as we pass through that stop.

Join us Monday morning for a fun walk to school!

Where are the stops?

Times

- 8:10 Langland Rd
- 8:12 Beadlemead
- 8:14 Farmborough
- 8:16 The Hide
- 8:18 Farthing Grove
- 8:20 Broadlands

Join the bus at the stops at these times. Please be aware the bus can not wait so if you want to join be on time.



All walking bus pupils get a free breakfast!

HAVE YOU
signed up
to...

BREAKFAST Club

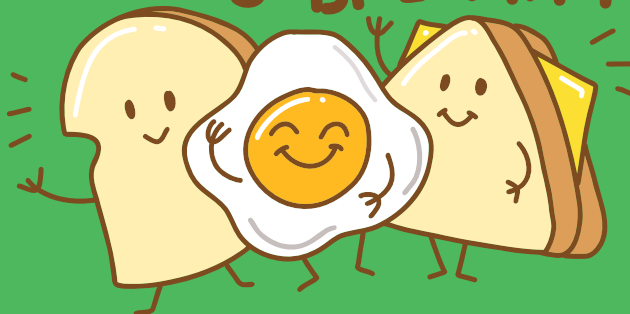
FREE!

WE'RE DELIGHTED TO SHARE THAT THE CHILDREN ARE LOVING BREAKFAST CLUB. IT'S PROVING TO BE A GREAT WAY FOR THEM TO START THE DAY: HAPPY, ENGAGED, AND READY TO LEARN.



WE HAVE DELICIOUS TOAST, CEREAL, FRUIT AND JUICE ALL WEEK BUT ON A FRIDAY WE CALL IT 'FUN FOOD FRIDAY'. WE HAVE PANCAKES, WAFFLES, BRIOCHE, FRUIT COVERED IN YOGHURT AND SOMETIMES BEANS ON TOAST!

LET'S BREAKFAST





DIARY DATES



Monday 27th April	School Photos for all Classes and Year 6 Leavers
Week beginning 11th May	Year 6 SATs WEEK
Friday 22nd May	Last day of Term
Monday 1st June	Children back to school
Wednesday 3rd June	Ark Farm visiting school for Ladybirds and Owls
Wednesday 10th June	Year 1 Trip - Park Trust Lakes
Tuesday 16th June	Year 4 Trip - Ashmolean Museum
Wednesday 17th June	Year 3 Trip - Wrest Park, Bedfordshire
Monday 22nd - Tuesday 23rd June	Year 6 - Rock UK Residential
Wednesday 25th June	Year 5 Trip - Natural History Museum, London
Friday 10th July	Year 2 Trip - Trip- Southend-on-Sea Seaside visit

Keep up to date on the website...



Our RESPECT Values:

Resilience... Equity... Self awareness... Passion... Empathy... Communication... Teamwork

